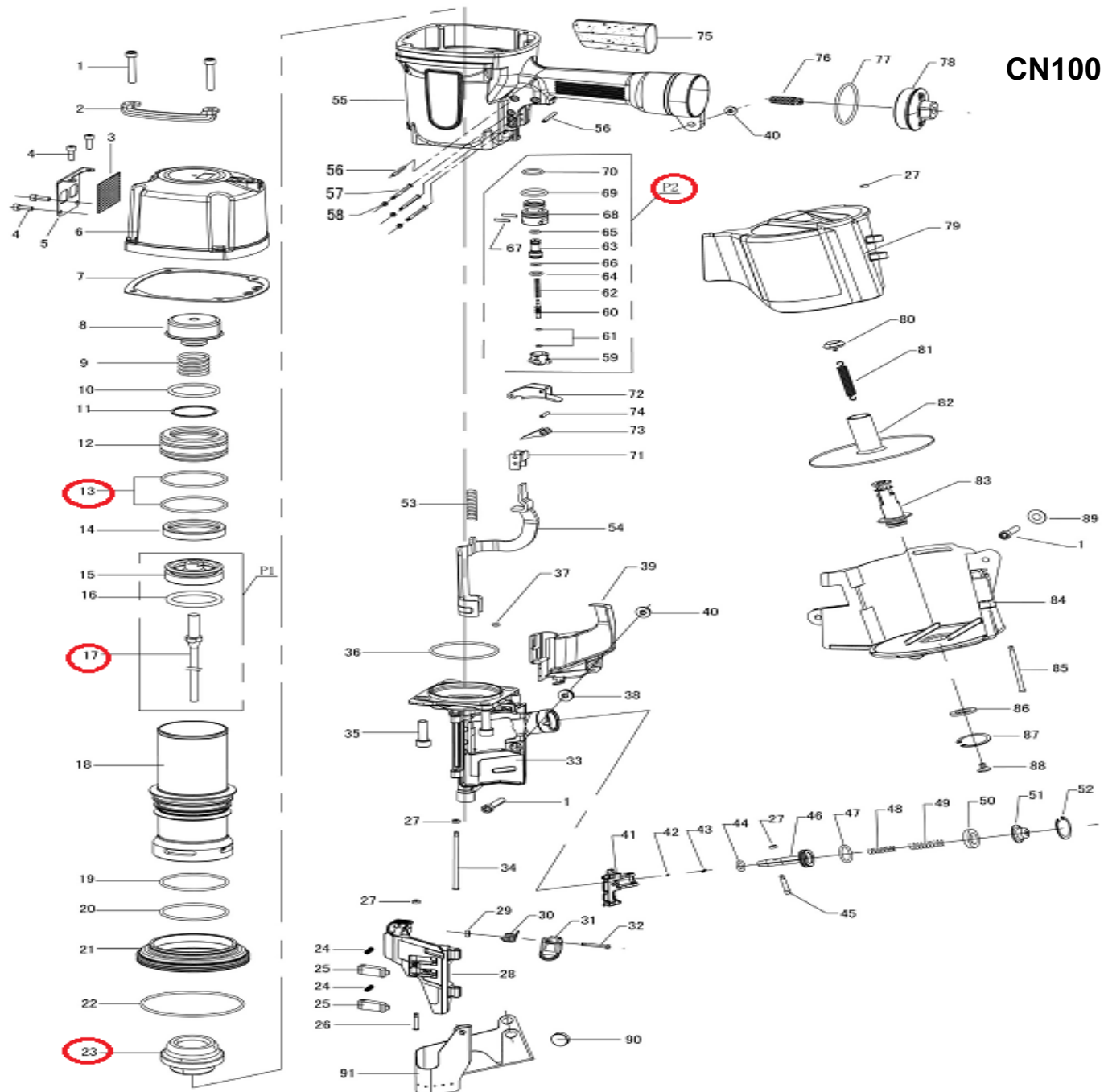


DESPIECE DE LA HERRAMIENTA

Usted encontrará con un círculo las piezas de desgaste recomendadas para mantener en stock.



013: O'ring 017: Lanceta 023: Tope P2: Válvula del gatillo

KIT: Dos o'rings (013), una lanceta (017), un tope (023) y una válvula del gatillo (P2)



Propiedad de: Implementos Neumáticos SA de CV
Prohibida la reproducción parcial o total

LISTA DE PARTES

MODELO: CN100

Item	Part No.	Description	Q'ty	P. Lista
1	CN100-1	BOLT M6X35	1	19.67
2	CN100-2	SIDE PROTECTOR	1	69.17
3	CN100-3	EXHAUST FILTER	1	69.17
4	CN100-4	BOLT M5X10	1	19.67
5	CN100-5	EXHAUST COVER	1	237.33
6	CN100-6	CYLINDER CAP	1	2,843.17
7	CN100-7	GASKET	1	498.51
8	CN100-8	PISTON STOP	1	474.66
9	CN100-9	COMPRESSION SPRING	1	189.62
10	CN100-10	O-RING 56.5X3	1	34.59
11	CN100-11	HEAD VALVE WASHER	1	42.93
12	CN100-12	HEAD VALVE PISTON	1	1,066.19
13	CN100-13	O-RING 69X3.2	1	34.59
14	CN100-14	HEAD VALVE SEAL	1	189.62
15	CN100-15	MAIN PISTON	1	568.87
16	CN100-16	O-RING 55.6X5.7	1	85.87
17	CN100-17	DRIVER BLADE	1	2,549.79
18	CN100-18	CYLINDER	1	4,310.07
19	CN100-19	O-RING 72X3.2	1	42.93
20	CN100-20	O-RING 70X5.7	1	85.87
21	CN100-21	CYLINDER RING	1	1,421.58
22	CN100-22	O-RING 108X3.5	1	85.87
23	CN100-23	BUMPER	1	1,066.19
24	CN100-24	CHECK PAWL SPRING	1	19.67
25	CN100-25	CHECK PAWL	1	256.41
26	CN100-26	STEP PIN	1	47.70
27	CN100-27	PIN CAP (A)	1	19.67
28	CN100-28	DOOR	1	2,369.70
29	CN100-29	PIN CAP (C)	1	19.67
30	CN100-30	SPRING	1	19.67
31	CN100-31	LATCH	1	170.54
32	CN100-32	LATCH PIN	1	19.67
33	CN100-33	NOSE	1	8,527.12
34	CN100-34	DOOR PIN	1	69.17
35	CN100-35	BOLT M10X30	1	26.24
36	CN100-36	O-RING 76.5X2.6	1	34.59
37	CN100-37	O-RING 6.6X1.6	1	19.67
38	CN100-38	WAHSER	1	34.59
39	CN100-39	GUARD COVER	1	285.03
40	CN100-40	NUT M6	1	19.67
41	CN100-41	FEED PAWL	1	1,421.58
42	CN100-42	FEED SPRING (A)	1	26.24
43	CN100-43	FEED SPRING (B)	1	26.24
44	CN100-44	O-RING 10X2.65	1	19.67
45	CN100-45	FEED PAWL PIN	1	47.70
46	CN100-46	FEED PISTON	1	474.66
47	CN100-47	O-RING 20.8X2.45	1	19.67

Item	Part No.	Description	Q'ty	P. Lista
48	CN100-48	FEED PISTON SPRING (A)	1	85.87
49	CN100-49	FEED PISTON SPRING (B)	1	85.87
50	CN100-50	FEED PISTON BUMPER	1	77.52
51	CN100-51	FEED PISTON CAP	1	189.62
52	CN100-52	SNAP RING	1	19.67
53	CN100-53	SAFETY SPRING	1	69.17
54	CN100-54	SAFETY	1	949.31
55	CN100-55	BODY	1	7,162.78
56	CN100-56	ROLL PIN 3X30	1	19.67
57	CN100-57	STRAIGHT PIN	1	19.67
58	CN100-58	O-RING 1.5X1.8	1	19.67
59	CN100-59	TRIGGER VALVE CAP	1	42.93
60	CN100-60	TRIGGER STEM	1	85.87
61	CN100-61	O-RING 2.5X1.4	1	19.67
62	CN100-62	SPRING	1	19.67
63	CN100-63	TRIGGER VALVE BUSHING	1	85.87
64	CN100-64	O-RING 8.6X1.9	1	19.67
65	CN100-65	O-RING 5.8X1.9	1	19.67
66	CN100-66	O-RING 6.3X1.8	1	19.67
67	CN100-67	STRAIGHT PIN B3X1.5	1	19.67
68	CN100-68	TRIGGER VALVE CAGE	1	60.82
69	CN100-69	O-RING 18.3X2.65	1	19.67
70	CN100-70	O-RING 16X1.8	1	19.67
71	CN100-71	SAFETY BRACKET	1	42.93
72	CN100-72	TRIGGER	1	69.17
73	CN100-73	CONTACT PLATE	1	19.67
74	CN100-74	ROLL PIN 3X16	1	19.67
75	CN100-75	HANDLE GRIP	1	145.50
76	CN100-76	FILTER	1	170.54
77	CN100-77	O-RING 45X3.2	1	34.59
78	CN100-78	END CAP	1	1,109.12
79	CN100-79	MAGAZINE COVER	1	742.99
80	CN100-80	SPRING HOLDER (A)	1	19.67
81	CN100-81	SPRING	1	19.67
82	CN100-82	NAIL SUPPORT PLATE	1	285.03
83	CN100-83	MAGAZINE POST	1	69.17
84	CN100-84	MAGAZINE	1	1,610.02
85	CN100-85	STEP PIN	1	69.17
86	CN100-86	RUBBER WAHSER	1	19.67
87	CN100-87	SNAP RING	1	19.67
88	CN100-88	SPRING HOLDER (B)	1	19.67
89	CN100-89	WASHER	1	19.67
90	CN100-90	RUBBER BUTTON	1	19.67
91	CN100-91	DUST COVER	1	145.50
P1	CN100-P1	DRIVER UNIT	1	3,203.33
P2	CN100-P2	TRIGGER VALVE	1	356.59

*Precios en moneda nacional