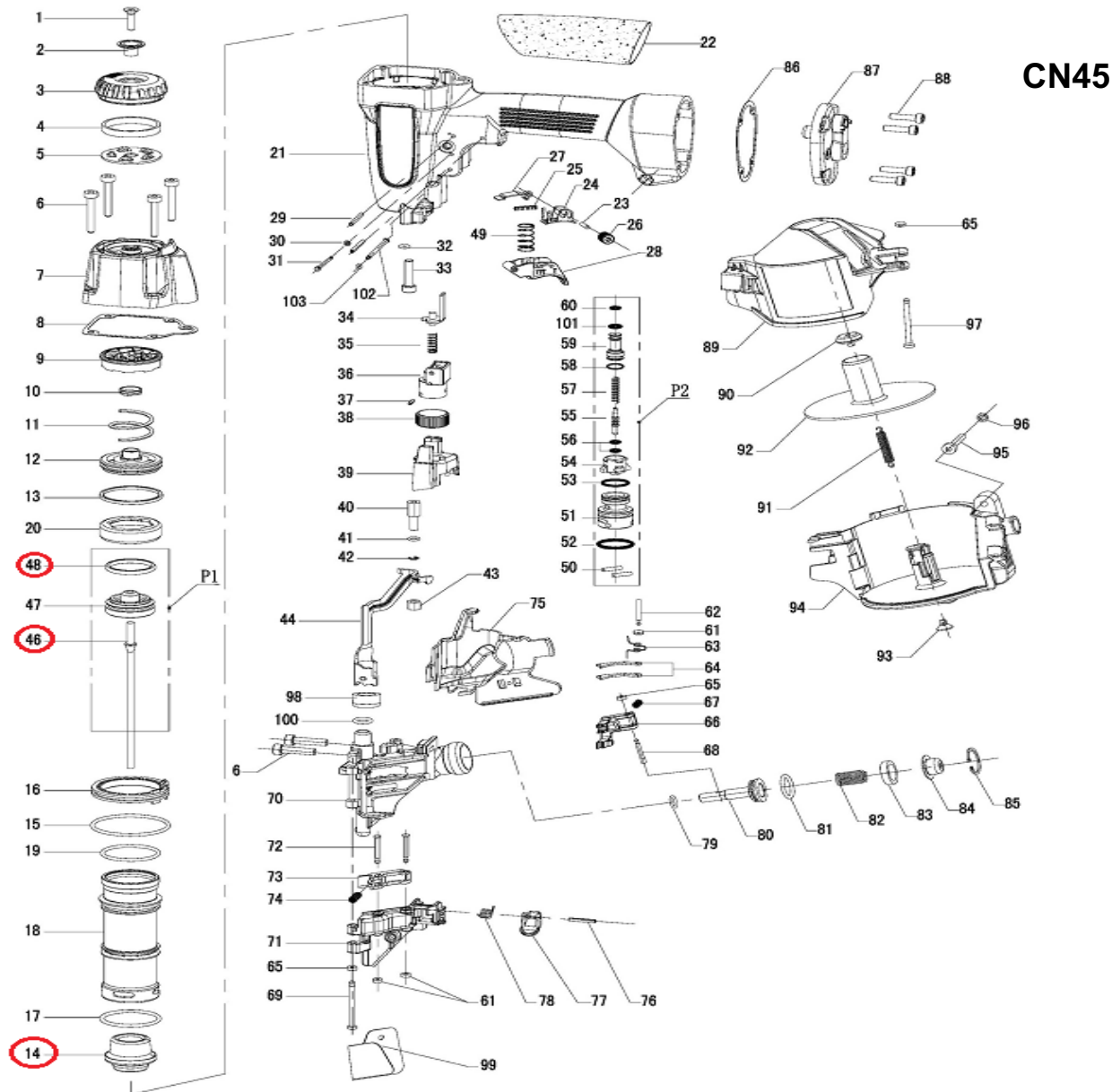


DESPIECE DE LA HERRAMIENTA

Usted encontrará con un círculo las piezas de desgaste recomendadas para mantener en stock.



013: O'ring 017: Lanceta 023: Tope P2: Válvula del gatillo

KIT: Dos o'rings (013), una lanceta (017), un tope (023) y una válvula del gatillo (P2)



Propiedad de: Implementos Neumáticos SA de CV
Prohibida la reproducción parcial o total

LISTA DE PARTES

MODELO: CN45

Item	Part No.	Description	Q'ty	P. Lista
1	CN45-1	BOLT M6X20	1	19.67
2	CN45-2	BUSHING	1	51.28
3	CN45-3	EXHAUST COVER	1	162.19
4	CN45-4	EXHAUST FILTER (A)	1	48.90
5	CN45-5	EXHAUST FILTER (B)	1	28.62
6	CN45-6	BOLT M5X25	1	19.67
7	CN45-7	CYLINDER CAP	1	647.58
8	CN45-8	GASKET	1	104.95
9	CN45-9	BACK BUMPER	1	176.51
10	CN45-10	EXHAUST SEAL	1	46.51
11	CN45-11	COMPRESSION SPRING	1	32.20
12	CN45-12	HEAD VALVE PISTON	1	243.29
13	CN45-13	O-RING 40X2.65	1	32.20
14	CN45-14	BUMPER	1	162.19
15	CN45-15	O-RING 51.5X2.65	1	32.20
16	CN45-16	CYLINDER RING	1	162.19
17	CN45-17	O-RING 38.7X3.55	1	32.20
18	CN45-18	CYLINDER	1	1,051.88
19	CN45-19	O-RING 38.7X2.65	1	32.20
20	CN45-20	CYLINDER COLLAR	1	94.22
21	CN45-21	BODY	1	1,941.56
22	CN45-22	HANDLE GRIP	1	137.15
23	CN45-23	PIN	1	19.67
24	CN45-24	TRIGGER BRACKET	1	23.85
25	CN45-25	SPRING	1	19.67
26	CN45-26	ADJUSTER BUTTON	1	56.05
27	CN45-27	CONTACT PLATE	1	19.67
28	CN45-28	TRIGGER	1	23.85
29	CN45-29	ROLL PIN 3X30	1	19.67
30	CN45-30	PIN CAP	1	19.67
31	CN45-31	STEP PIN	1	21.47
32	CN45-32	O-RING 4X1.5	1	19.67
33	CN45-33	BOLT M6X22	1	19.67
34	CN45-34	SAFETY UPPER	1	40.55
35	CN45-35	SPRING	1	19.67
36	CN45-36	SAFETY UPPER GUIDE	1	72.75
37	CN45-37	ROLL PIN 2.5X10	1	19.67
38	CN45-38	ADJUSTER DIAL	1	23.85
39	CN45-39	SAFETY GUIDE	1	51.28
40	CN45-40	ADJUSTER	1	176.51
41	CN45-41	O-RING 5.15X1.8	1	19.67
42	CN45-42	SNAP RING	1	19.67
43	CN45-43	NUT	1	21.47
44	CN45-44	SAFETY	1	363.74
45	CN45-45	NOT APPLICABLE	1	19.67
46	CN45-46	DIRVER BLADE	1	1,375.07
47	CN45-47	PISTON	1	202.74
48	CN45-48	O-RING 30X3.55	1	32.20
49	CN45-49	SPRING	1	19.67

Item	Part No.	Description	Q'ty	P. Lista
54	CN45-54	TRIGGER VALVE CAP	1	40.55
55	CN45-55	TRIGGER STEM	1	81.10
56	CN45-56	O-RING 2.5X1.4	1	19.67
57	CN45-57	TRIGGER VALVE SPRING	1	19.67
58	CN45-58	O-RING 8.6X1.9	1	19.67
59	CN45-59	TRIGGER VALVE BUSHING	1	81.10
60	CN45-60	O-RING 5.8X1.9	1	19.67
61	CN45-61	PIN CAP (B)	1	19.67
62	CN45-62	STEP PIN	1	19.67
63	CN45-63	FEED SPRING	1	19.67
64	CN45-64	CHECK TOE	1	35.78
65	CN45-65	PIN CAP (A)	1	19.67
66	CN45-66	FEED PAWL	1	355.40
67	CN45-67	SPRING	1	19.67
68	CN45-68	FEED PAWL PIN	1	28.62
69	CN45-69	DOOR PIN	1	23.85
70	CN45-70	NOSE	1	2,177.70
71	CN45-71	DOOR	1	566.49
72	CN45-72	CHECK PAWL PIN	1	23.85
73	CN45-73	CHECK PAWL	1	194.39
74	CN45-74	CHECK PAWL SPRING	1	19.67
75	CN45-75	GUARD COVER	1	72.75
76	CN45-76	ROLL PIN 3X20	1	19.67
77	CN45-77	LATCH	1	162.19
78	CN45-78	LATCH SPRING	1	19.67
79	CN45-79	O-RING 9X1.8	1	19.67
80	CN45-80	FEED PISTON	1	194.39
81	CN45-81	O-RING 17X2.65	1	19.67
82	CN45-82	FEED PISTON SPRING	1	23.85
83	CN45-83	FEED PISTON BUMPER	1	19.67
84	CN45-84	FEED PISTON CAP	1	22.66
85	CN45-85	SNAP RING	1	19.67
86	CN45-86	END CAP SEAL	1	40.55
87	CN45-87	END CAP	1	243.29
88	CN45-88	BOLT M5X22	1	19.67
89	CN45-89	MAGAZINE COVER	1	323.20
90	CN45-90	SPRING HOLDER (A)	1	19.67
91	CN45-91	MAGAZINE SPRING	1	19.67
92	CN45-92	NAIL SUPPORT PLATE	1	153.85
93	CN45-93	SPRING HOLDER (B)	1	19.67
94	CN45-94	MAGAZINE	1	485.39
95	CN45-95	BOLT M5X35	1	19.67
96	CN45-96	NUT M5	1	19.67
97	CN45-97	MAGAZINE PIN	1	23.85
98	CN45-98	NOSE CAP	1	81.10
99	CN45-99	NOT APPLICABLE	1	19.67
100	CN45-100	O-RING 10X1.8	1	19.67
101	CN45-101	O-RING 6.3X1.8	1	19.67
102	CN45-102	STRAIGHT PIN	1	19.67