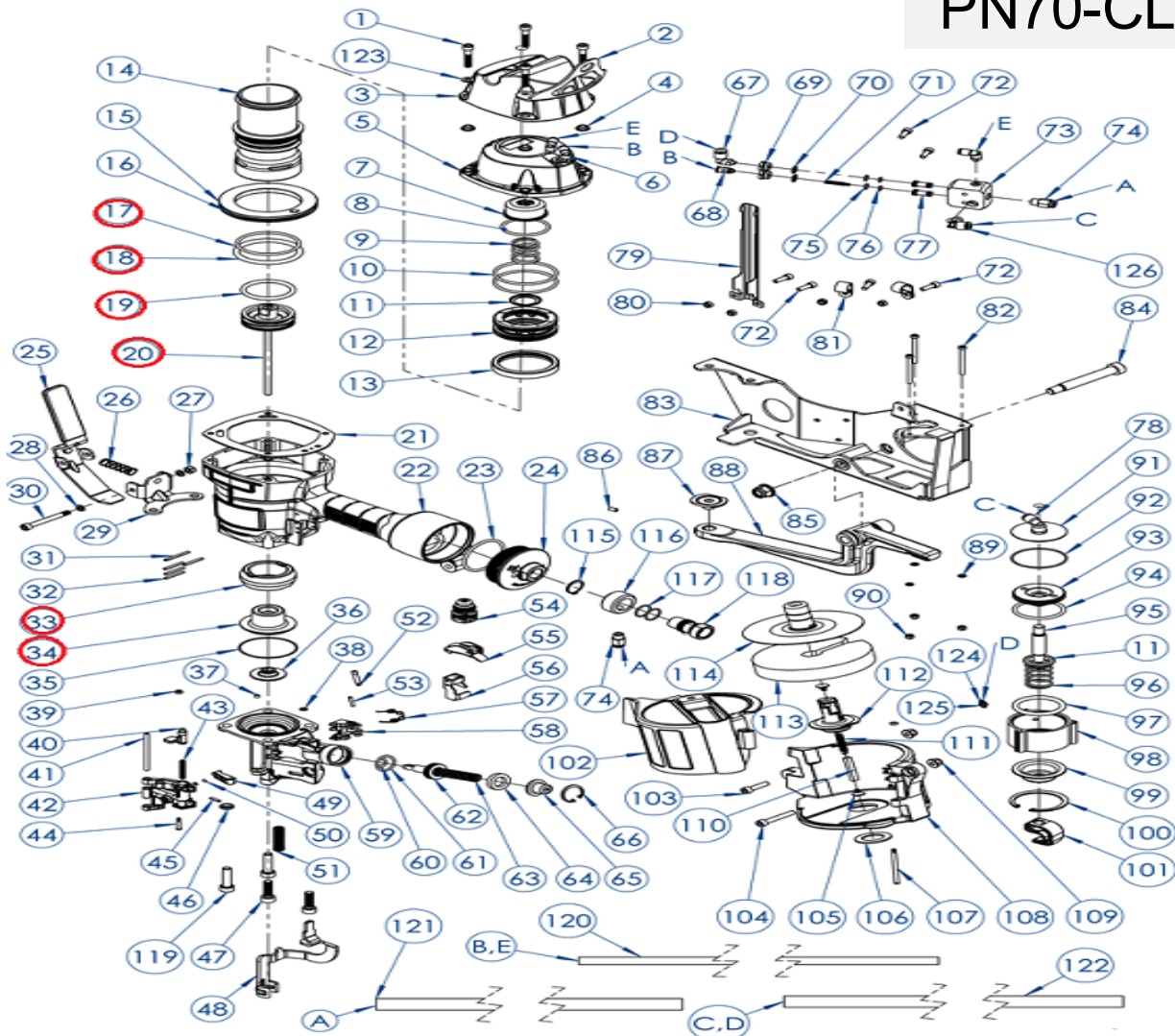


DESPIECE DE LA HERRAMIENTA

Usted encontrará con un círculo las piezas de desgaste recomendadas para mantener en stock.

PN70-CL



KIT: O-ring (17), o-ring (18), o-ring (19), Main piston unit una lanceta (20), bumper A (33), bumper B(34)

Propiedad de: Implementos Neumáticos SA de CV
Prohibida la reproducción parcial o total

CONFIDENCIAL

LISTA DE PARTES

MODELO: PN70-CL

Item	Part No.	Description	Q'ty	P. Lista
1	PN70-CL-1	Screw Socket Hd M6*35	4	19.67
2	PN70-CL-2	TOOL HANGER- 70	1	500.89
3	PN70-CL-3	Cap Cover	1	302.92
4	PN70-CL-4	Bushing	4	72.75
5	PN70-CL-5	Cylinder Cap	1	1,395.35
6	PN70-CL-6	RCVA2 Coupler	3	206.32
7	PN70-CL-7	Piston Stop	1	145.50
8	PN70-CL-8	O-Ring	1	50.09
9	PN70-CL-9	Spring, Head Valve	1	70.36
10	PN70-CL-10	O-Ring	2	83.48
11	PN70-CL-11	Washer, Head Valve Spring	2	25.04
12	PN70-CL-12	Head Valve Piston	1	338.70
13	PN70-CL-13	Cylinder Seal	1	58.44
14	PN70-CL-14	Cylinder	1	1,233.15
15	PN70-CL-15	Cylinder Ring	1	155.04
16	PN70-CL-16	O-Ring	1	59.63
17	PN70-CL-17	O-Ring	1	32.20
18	PN70-CL-18	O-Ring	1	53.67
19	PN70-CL-19	O-Ring	1	63.21
20	PN70-CL-20	Main Piston Unit	1	2,051.28
21	PN70-CL-21	Cylinder Cap Seal	1	214.67
22	PN70-CL-22	Frame	1	2,884.91
23	PN70-CL-23	O-Ring	1	27.43
24	PN70-CL-24	End Cap	1	447.23
25	PN70-CL-25	Safety Handle	1	2,416.22
26	PN70-CL-26	Spring	1	20.27
27	PN70-CL-27	Nut M6	1	19.67
28	PN70-CL-28	Spring Washer	2	19.67
29	PN70-CL-29	Bracket	1	1,494.33
30	PN70-CL-30	Hex Soc Screw M6*55.2	1	44.13
31	PN70-CL-31	Roll Pin	1	19.67
32	PN70-CL-32	Roll Pin	4	19.67
33	PN70-CL-33	Bumper A	1	305.31
34	PN70-CL-34	Bumper B	1	317.23
35	PN70-CL-35	O-Ring	1	19.67
36	PN70-CL-36	Driver Guide	1	518.78
37	PN70-CL-37	O-Ring	1	19.67

Item	Part No.	Description	Q'ty	P. Lista
65	PN70-CL-65	Spring Collar	1	46.51
66	PN70-CL-66	C-Ring	1	19.67
67	PN70-CL-67	Coupler	1	206.32
68	PN70-CL-68	RCVA1 Coupler	1	155.04
69	PN70-CL-69	Coupler	2	144.31
70	PN70-CL-70	O-Ring	2	19.67
71	PN70-CL-71	Spring	1	34.59
72	PN70-CL-72	Screw M5*14	6	19.67
73	PN70-CL-73	Manifold	1	1,477.64
74	PN70-CL-74	Coupler	2	165.77
75	PN70-CL-75	O-Ring	2	19.67
76	PN70-CL-76	O-Ring	2	19.67
77	PN70-CL-77	Actuation Stem	2	108.53
78	PN70-CL-78	Coupler	1	961.24
79	PN70-CL-79	Hose Cover	1	151.46
80	PN70-CL-80	Anchor Block Loc	4	19.67
81	PN70-CL-81	Hose Clamp	2	19.67
82	PN70-CL-82	Hex.Soc.Hd.Bolt M	3	19.67
83	PN70-CL-83	Main Bracket	1	8,356.58
84	PN70-CL-84	Screw M12*70	1	190.82
85	PN70-CL-85	Nut M10	1	19.67
86	PN70-CL-86	Screw Socket Hd	1	19.67
87	PN70-CL-87	Anvil	1	739.41
88	PN70-CL-88	Clinch Arm	1	3,817.53
89	PN70-CL-89	Washer	3	19.67
90	PN70-CL-90	Lock Nut	3	19.67
91	PN70-CL-91	Cylinder Cap	1	89.45
92	PN70-CL-92	O-Ring	1	19.67
93	PN70-CL-93	Piston	1	661.90
94	PN70-CL-94	O-Ring	1	25.04
95	PN70-CL-95	Connecting	1	267.14
96	PN70-CL-96	Spring, Cylinder	1	83.48
97	PN70-CL-97	O-Ring	1	33.39
98	PN70-CL-98	Cylinder	1	434.11
99	PN70-CL-99	Cylinder cover	1	151.46
100	PN70-CL-100	C-Ring	1	36.97
101	PN70-CL-101	Clinch Bracket	1	651.16

BELTEK®

38	PN70-CL-38	O-Ring	1	19.67
39	PN70-CL-39	Rubber Washer	3	19.67
40	PN70-CL-40	Door Latch	1	243.29
41	PN70-CL-41	Straight Pin	1	53.67
42	PN70-CL-42	Door	1	1,282.05
43	PN70-CL-43	Spring, Door Latch	1	19.67
44	PN70-CL-44	Step Pin	1	51.28
45	PN70-CL-45	Roll Pin	1	19.67
46	PN70-CL-46	Spacer	1	41.74
47	PN70-CL-47	Screw Socket Hd M8*28	2	19.67
48	PN70-CL-48	Contact Arm	1	644.01
49	PN70-CL-49	Check Pawl	1	243.29
50	PN70-CL-50	Compression Spring	1	23.85
51	PN70-CL-51	Spring, Contact Arm	1	29.82
52	PN70-CL-52	Step Pin	1	40.55
53	PN70-CL-53	Roll Pin	1	19.67
54	PN70-CL-54	Trigger Valve Unit (C.T)	1	598.69
55	PN70-CL-55	Trigger Unit (C.T)	1	100.18
56	PN70-CL-56	Contact Arm Guide	1	129.99
57	PN70-CL-57	Spring, Feed Pawl	1	46.51
58	PN70-CL-58	Feed Pawl	1	692.90
59	PN70-CL-59	Nose	1	7,095.99
60	PN70-CL-60	O-Ring	1	19.67
61	PN70-CL-61	O-Ring	1	19.67
62	PN70-CL-62	Feed Piston	1	603.46
63	PN70-CL-63	Spring, Feed Piston	1	25.04
64	PN70-CL-64	Feed Piston Stop	1	26.24

102	PN70-CL-102	Magazine Cover	1	401.91
103	PN70-CL-103	Screw Socket Hd	1	19.67
104	PN70-CL-104	Screw Socket Hd	1	19.67
105	PN70-CL-105	Receiver, Spring	2	19.67
106	PN70-CL-106	Rubber Washer	1	25.04
107	PN70-CL-107	Step Pin	1	77.52
108	PN70-CL-108	Magazine	1	903.99
109	PN70-CL-109	Nut, Elastic Stop M	2	19.67
110	PN70-CL-110	Spacer	1	19.67
111	PN70-CL-111	Tension Spring	1	52.47
112	PN70-CL-112	Magazine Post	1	77.52
113	PN70-CL-113	Magazine Space	1	66.79
114	PN70-CL-114	Nail Support	1	574.84
115	PN70-CL-115	C-Ring	1	19.67
116	PN70-CL-116	Core tube	1	453.19
117	PN70-CL-117	O-Ring	2	19.67
118	PN70-CL-118	Patched Coupler	1	677.40
119	PN70-CL-119	Screw Socket Hd	2	19.67
120	PN70-CL-120	PU Hose B/E	2	20.27
121	PN70-CL-121	PU Hose	1	41.74
122	PN70-CL-122	PU Hose C/D	2	20.27
123	PN70-CL-123	Plain Washer	2	19.67
124	PN70-CL-124	Fittings	1	132.38
125	PN70-CL-125	O-Ring	1	19.67
126	PN70-CL-126	Coupler	1	186.05
127	PN70-CL-127	Washer M8	2	19.67